



Office of Personnel Management Investigations Service

**Presentation
*for***

2000

**U. S. Army
Personnel Security
Conference**

Office of Personnel Management Investigations Service Structure



Headquarters
1900 E Street, NW
Washington, DC

COR
Policy
Comptroller
Security Appraisal
PIPS Security



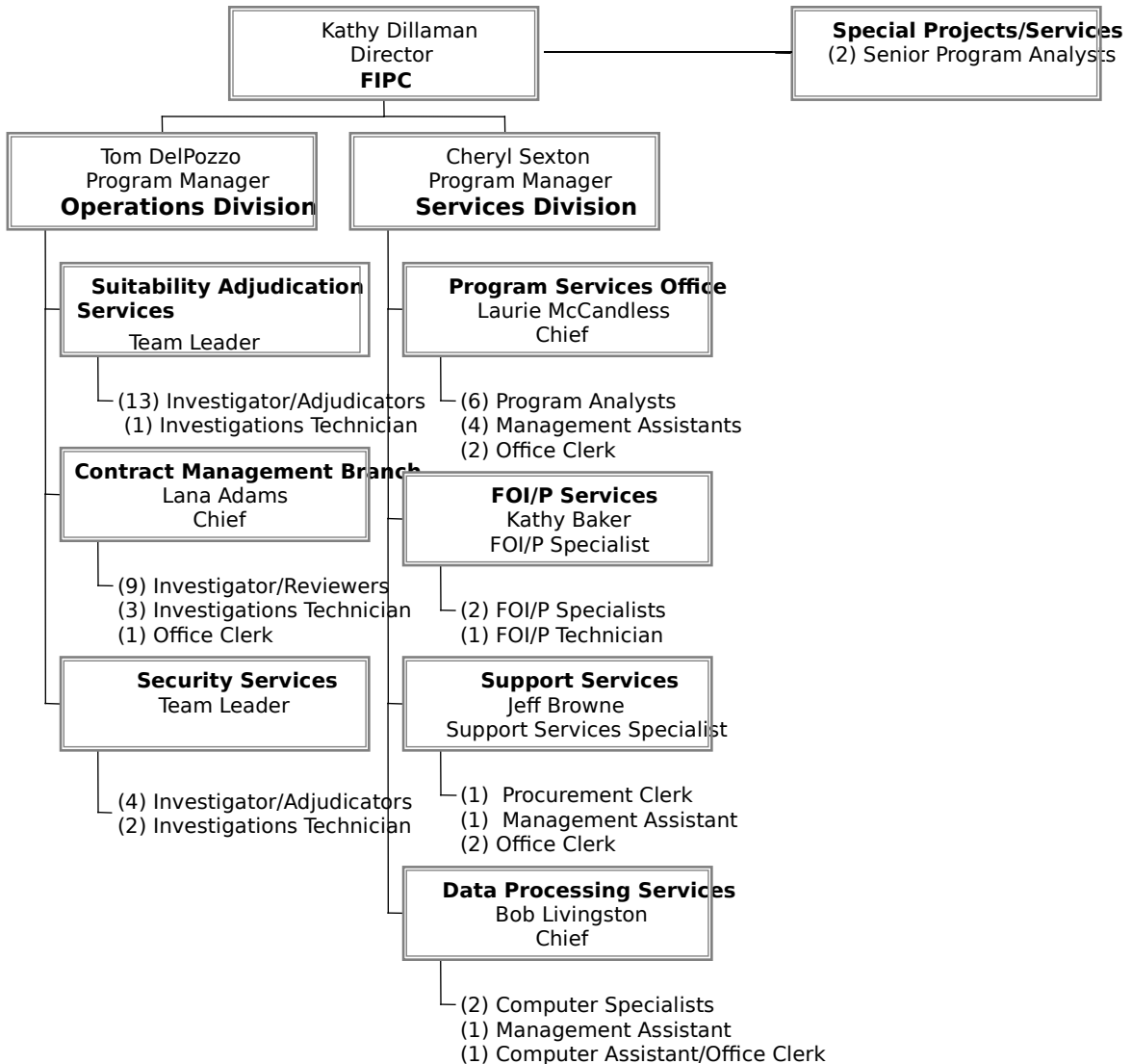
Federal Investigations Processing Center
P O Box 618
Boyers, PA

Contract Oversight
Federal Operations
PIPS Development
Customer Liaison
Facility Management
Procurement



Federal Investigations Processing Center Organizational Structure

(Proposed)

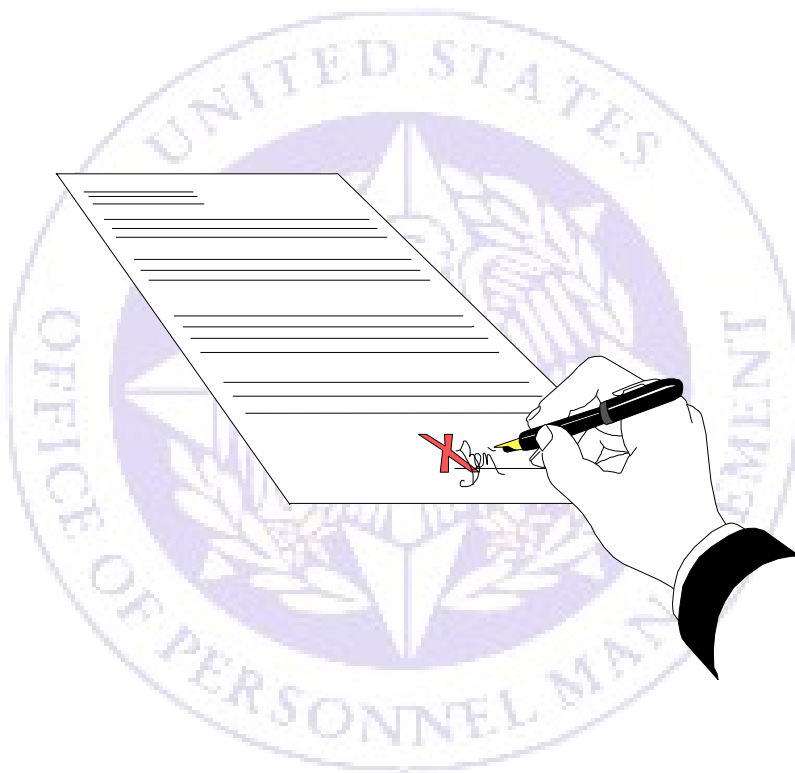


68 FTE (including 19 vacancies)

Federal Investigations Processing Center



- **Located in western Pennsylvania**
- **Converted limestone mine**
- **220 feet below ground**
- **Guarded 24 hours a day with armed guards**
- **3 ton steel gate protects the entrance**



Department of Personnel Management Investigations Service



Customers:

- ◆ 1700 Agency Security Components
- ◆ 4800 Personnel/HR Components

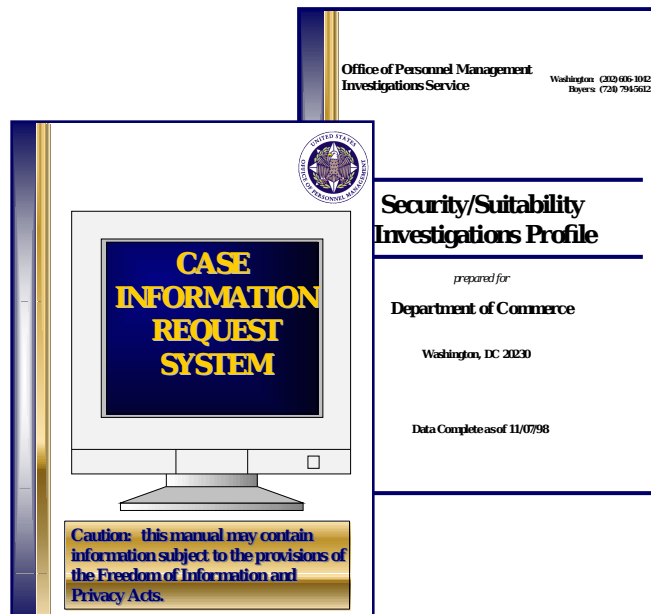


100 Federal Agencies

OPM-IS Products:



- ◆ **Background Investigations**
- ◆ **Suitability Determinations**
- ◆ **Merit System Cases**
- ◆ **Trust Fund Cases**
- ◆ **Post Appointment Arrests**
- ◆ **Freedom of Information/Privacy (FOI/P)**
- ◆ **Security/Suitability Investigations Index**
- ◆ **Data**
- ◆ **Consultation Services**



WORKLOADS (*FY 00*)

(New Civilian DOD workload excluded)

National Security

Investigations---62,375

Investigation for persons performing, or seeking to perform, duties for the Federal government requiring access to classified information as mandated by Executive Order 12968 and the Atomic Energy Act.

Public Trust Investigations---43,313

Investigation for persons which have the potential to adversely affect the integrity, efficiency, effectiveness, or delivery of public service, and for certain sensitive positions that do not require access to classified

Non-Sensitive Investigations---73,57

Minimum investigative standard for Federal employment under Executive Order 10450.

Special Agreement Checks/Other---2

A limited investigation (or series of checks), to meet an agency's specific needs by special agreement with OPM, including those needing access to national security installations.

Opm and dOd working together in partnership



Civilian Workloads

□ June 7, 1999: *We were asked to help*

□ July 24, 1999: *We began processing*

Period

Commitment

FY 00

43,000

FY 01

73,216

Military Workloads



□ April 11, 2000: *We were asked to help*

□ October 1, 2000: *We began processing*

Period

Commitment

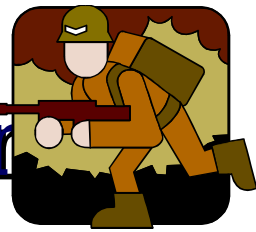
FY 01

342,626

FY 02

324,908

Military Accession



Army and Coast Guard (ENTNAC) - t

Marines (ENTNAC) - OPM: 85,178

AF (NACLC)-OPM:

NAVY (NACLC)- OPM: 237,44

Total Military:

342,626

Total Civilian:

73,216

Total FY 01:

415,842

**All Military Secret and Confidential
Initials and PR's to OPM**

STAFFING ADJUSTMENTS

Since this workload is heavily dependent on field investigator support, this commitment reflects an ambitious hiring effort by our contractor for field agents.

□ OPM added **12** staff and plans for an

additional **14** FTE to support oversight of

□ The contractor has increased its staff

significantly since 6/99, with continual hiring

initiatives underway, in support of the

additional DOD workloads



OPM Processing Support for DoD

Space: Our office space in Boyers, PA., was expanded by 16,000 sq. feet for the addition of the 150 contractor staff .



Equipment: Additional high-speed scanners were required to process the DOD fingerprint cards to the FBI. Other equipment including desk top terminals, printers, microfilm machines, and



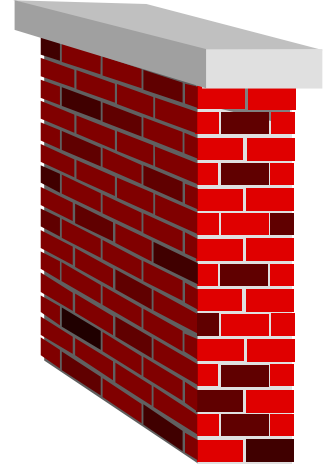
Capacity: Our automated processing system was upgraded to double its capacity to allow for the additional workloads.

▮ **April 2000...** OPM/IS upgraded mainframe to over double the size of CPU from 42 MIPS to 88 MIPS.

▮ **August, 2000...** facility expanded to add 200+ connections

locally to mainframe for data entry

Obstacles Impeding Process



- **Ability to obtain 3rd party information (FBI, INS, etc.)**

- **Continued cooperation of local law enforcement**



- **Obtaining previous defense files**

- **Avalanche of closed cases for adjudication**



What is PIPS?



Personnel Investigations Processing System

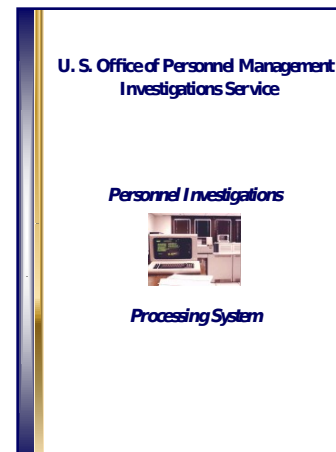
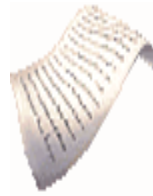
□ OPM IS automated system for
processing and controlling
background investigations



3,889,724 Subject Records



5,715,522 Investigative Records



What is the SII?



Security/Suitability Investigations Index

- ❖ **Maintained by Office of Personnel Management (OPM) Investigations Service (IS)**
- ❖ **OPM's system of investigative records that includes OPM-conducted investigations as well as notification of investigations conducted by other investigative agencies.**
- ❖ **Most records maintained 15 years; serious issue and loyalty cases maintained 25 years.**

SON/SOI's

SON (Submitting Office Number): *Unique four-digit code identifying the submitting office.*
Submitting Office Personnel:

Access limited to current case status (pending/closed) information and expected completion date of investigation by that office.



SOI (Security Office Identifier): *Unique four-digit code identifying the security office.*

Security Office Personnel:

- Must be authorized by the agency Security Officer and then background investigation verified by OPM to be on the list of authorized contacts
- Must be set up with user ID and password by OPM's PIPS Security Officer if direct access is to be given

Access for SII searches will provide:

- Record or No Record information about subject
- Whether any investigation for that subject contains issues
- What types of issues are present
- Status of specific items
- Results of items
- File release
- Case specific data
- Generate case notices